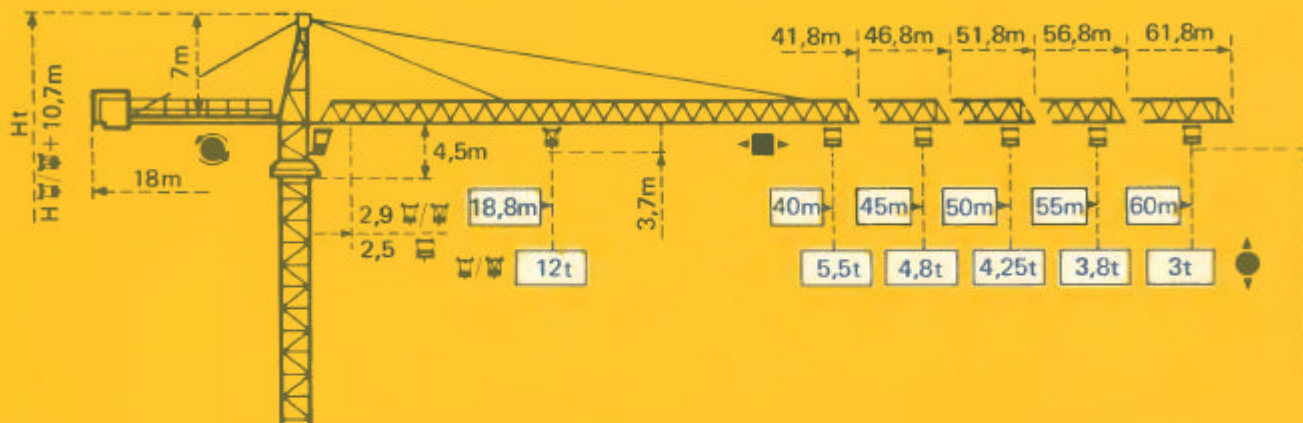


---

**TOPKIT H30 / 30C**

---

**POTAIN** 



Măture Mast Mast Mástil

2m x 2m

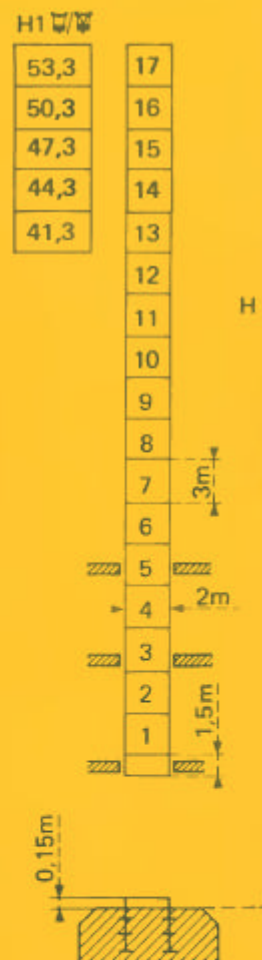
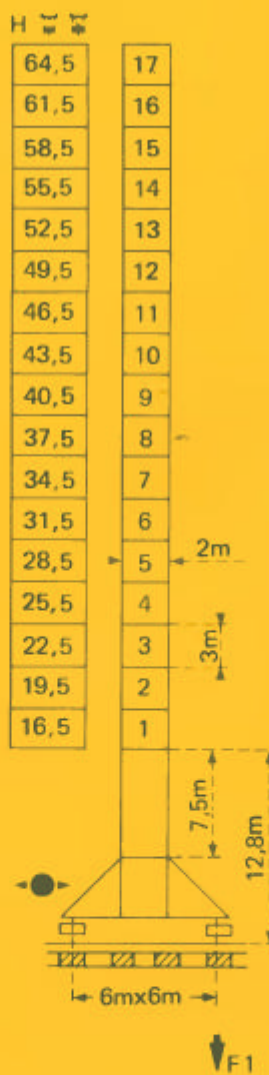
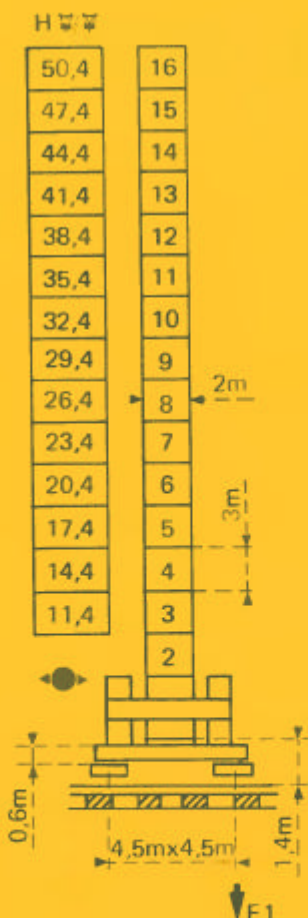
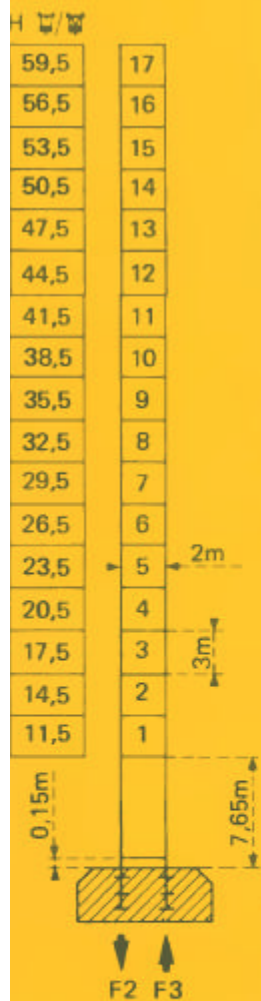
PA 682

ZD 686

VB 682

BA65A

$$H_{\text{H30/30C}} = H_{\text{H30/30C}} + 1\text{m}$$



F = Réactions Eckdrücke Reactions Reacciones

F2	● 129t	■ 158t
F3	● 84t	■ 119t
	61t	

F1	● 89t	■ 105t
	67t	

F1	● 86t	■ 106t
	74t	

Voir ci-contre  
Siehe nebenstehend  
See opposite  
Ver página opuesta

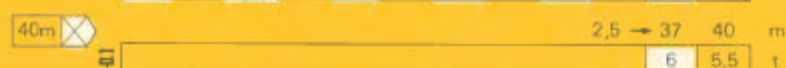
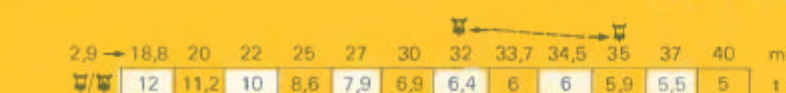
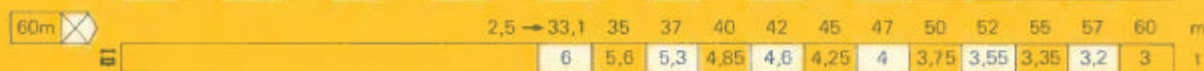
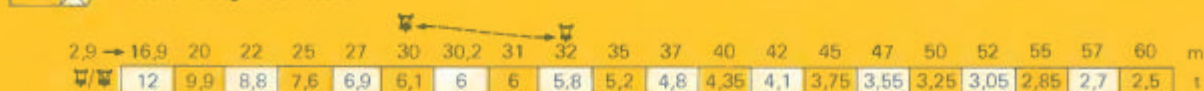
Courbes de charges

Lastkurven

Load diagrams

Curvas de cargas

Fleche Ausleger Jib Flecha



Chariot standard 2/4 brins. (En cas d'utilisation déduire 0,2 t aux charges ).

Chariot optionnel 2 brins uniquement.

Standardlaufkatze 2/4 Stränge. (Bei Einsatz von ist 0,2 t der Lasten von abzuziehen. Laufkatze in Sonderausführung mit nur 2 Strängen.

Standard trolley 2/4 fall. (When using subtract 0,2 t from the loads ).

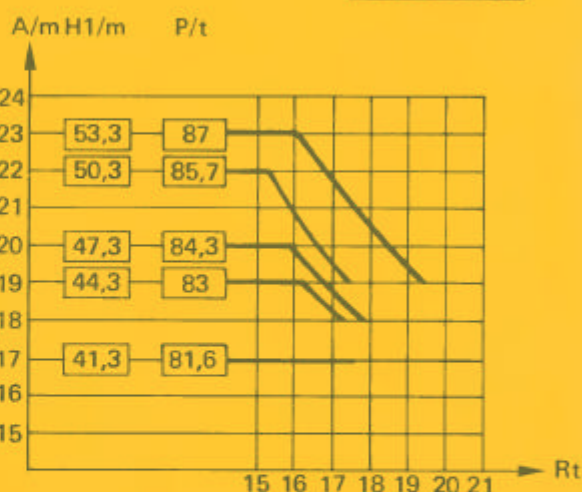
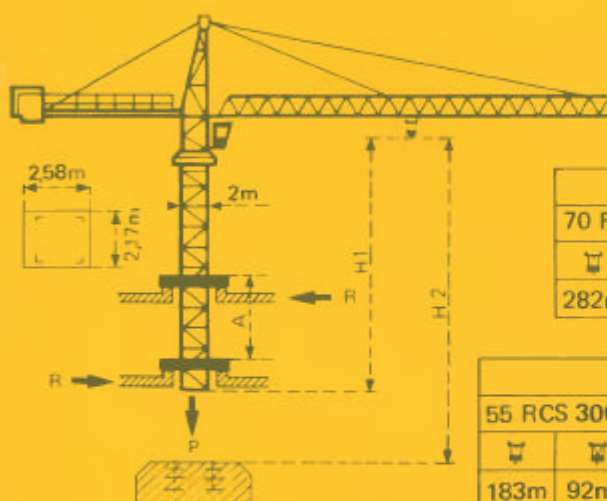
Optional trolley 2 fall only.

Carro standard 2/4 ramales. (En caso de utilización quitar 0,2 t de las cargas ).

Carro opcional en 2 ramales solamente.

Télescopage sur dalles - Ketterkrane im Gebäude  
Climbing crane - Telescopage gruas trepadoras

BA65A



A Distance entre cadres  
H1 Hauteur grue  
P Poids de la grue (En service)  
R Réaction horizontale

A Abstand zwischen den Rahmen  
H1 Kranhöhe  
P Krangewicht (In Betrieb)  
R Horizontalkräfte

A Distance between collars  
H1 Crane height  
P Crane weight (In service)  
R Horizontal reaction

A Distancia entre marcos  
H1 Altura grúa  
P Peso de la grúa (En servicio)  
R Reacción horizontal

● En service  
■ Hors service

● In Betrieb  
■ Ausser Betrieb

● In service  
■ Out of service

● En servicio  
■ Fuera de servicio























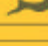








A vide sans lest avec flèche et hauteur maximum

Ohne Last und Ballast mit Maximalausleger und Maximalhöhe.

Without load and ballast with longest jib and maximum height.

Sin cargas, sin lastre con flecha y altura máxima.



				m/min	t		ch-PS hp	kW
Levage Heben Hoisting Elevación	33 PC 30C 			3,5	6	408m >408m *	33	24
				19	6			
				38	3			
				1,75	12			
				9,5	12			
				19	6			
	55 RCS 30C 			0 → 34	6	365m >365m *	55	40,5
				0 → 68	3			
				0 → 17	12			
				0 → 34	6			
				0 → 40	6			
				0 → 80	3			
70 RCS 30 C 			0 → 20	12	565 m > 565 m *	70	51	
			0 → 40	6				
			0 → 40	6				
			0 → 40	6				
Distribution - Katzfahren Trolleying - Distribución		6 D3V 4	10 40 80				6	4,4
Orientation - Schwenken Slewing - Orientación		OMD 55	0 → 0,7 tr/min U/min-rpm				2 x 8	2 x 5,9
Translation Kranfahren Travelling Traslación	ZD 686 	RT 443 A1 2 V	15 - 30				4 x 5	4 x 3,7
	VB 682 	RT 443 A1 2V	15 - 30				4 x 5	4 x 3,7
	R ≥ 13m 	TCV 649 ARC H ≤ 43,5m	10 - 50				4 x 6,8	4 x 5
Réseau - Netzstrom - Mains supply - Red							380V - 50HZ	
Puissance électrique nécessaire - Anschlusswert Necessary electric power - Potencia eléctrica necesaria							33 PC : 60 KVA 55 RCS : 80 KVA 70 RCS : 105 KVA	
Groupe électrogène - Stromaggregat - Generator set - Grupo electrogeno							*	

\* Nous consulter - Auf Anfrage - Consult us - Consultarnos

Conforme à la directive CEE 84/534 sur le niveau acoustique - In compliance with the EEC 84/534 Instruction on noise level  
gemäß EWG-Richtlinie 84/534 über Schall-Leistungspegel - Conforme con la directiva CEE 84/534 sobre el nivel acustico

NF 52081 - 82

**POTAIN** rue de Charbonnières, B.P. 173-F 69132 ECULLY Cedex  
T. 72.20.20.20 - Télex 330 179 - Télex. Export 375 213 -  
F. 72 20 20 00POTAIN GmbH 6082 MÖRFELDEN WALLDORF  
Industrie- und Handwerksstr. 79-87 - Postfach 420  
T. 06 105 704.0 - Télex 4.1857 45**TOPKIT H30/30C**

Réf.1989.09 KYI 2