

Mat / Réactions City 1,6 m

Maste /
Eckdrücke

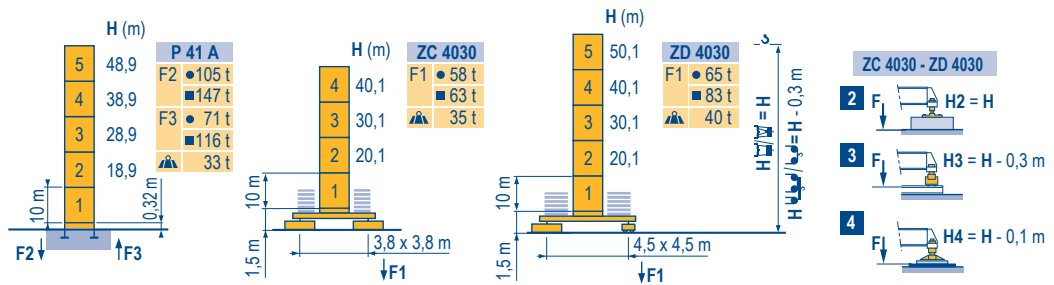
Masts /
Reactions

Mástil /
Reacciones

Torre / Reazioni

Tramo /
Reacções

LVL 1



Télescopable 1,6 m

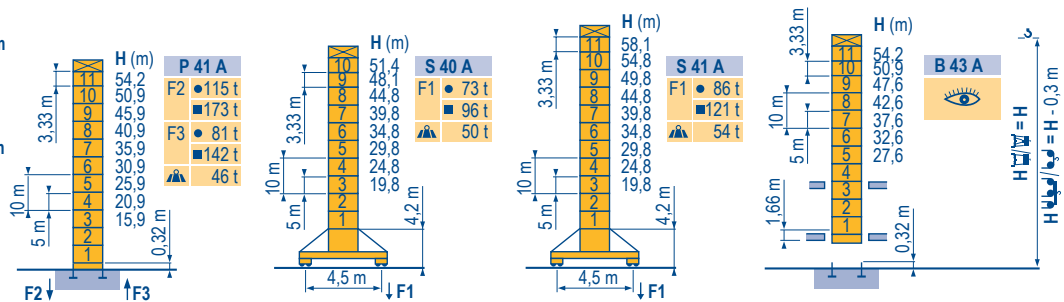
Teleskopierbar 1,6 m

Telescopico 1,6 m

Telescopico 1,6 m

Telescopagem 1,6 m

Telescopagem 1,6 m



Télescopage sur dalles
Kletterkrane im Gebäude

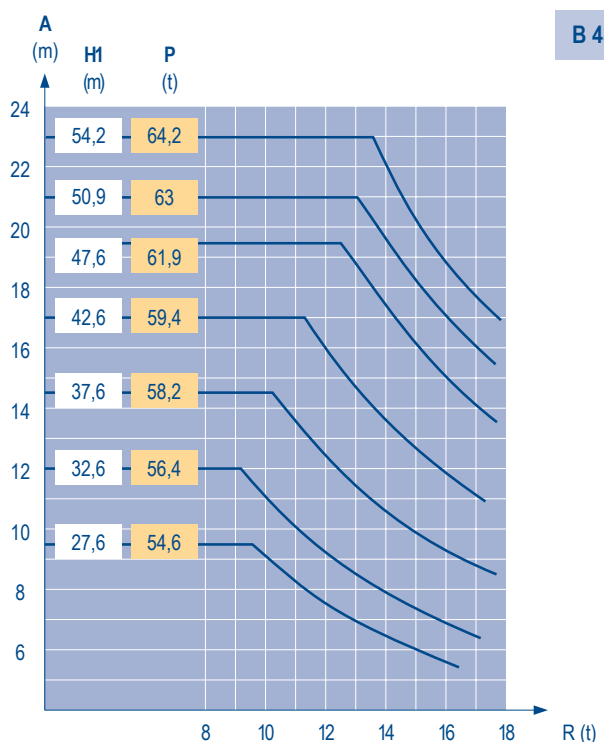
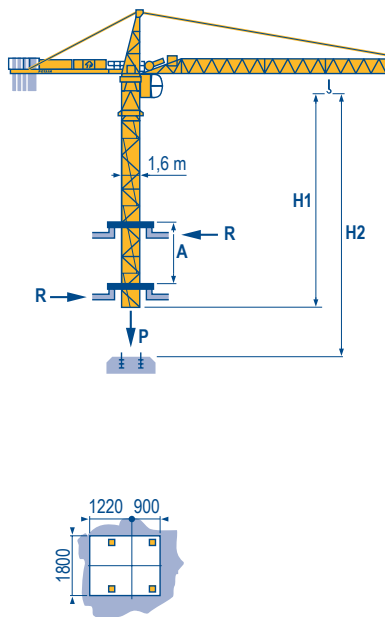
Climbing crane

Telescopage gruas trepadoras

Gru in cavedio

Telescopagem sobre lages

LVL 1



CITY CRANE
MD 125 B

POTAIN

F	D	GB	E	I	P
●	●	●	●	●	●
■	■	■	■	■	■
▲	▲	▲	▲	▲	▲
Réactions en service	Reaktionskräfte in Betrieb	Reactions in service	Reacciones en servicio	Reazioni in servizio	Reacções em serviço
Réactions hors service	Reaktionskräfte außer Betrieb	Reactions out of service	Reacciones fuera de servicio	Reazioni fuori servizio	Reacções fora de serviço
A vide sans lest (ni train de transport) avec flèche et hauteur maximum.	Ohne Last, Ballast (und Transportachse), mit Maximalausleger und Maximalhöhe.	Without load, ballast (or transport axes), with maximum jib and maximum height.	Sin carga, sin lastre, (ni tren de transporte), flecha y altura máxima.	A vuoto, senza zavorra (ne assali di trasporto) con braccio massimo e altezza massima.	Sem carga (nem trem de transporte)- sem lastro com lança e altura máximas.

Courbes de charges

Lastkurven

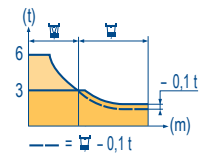
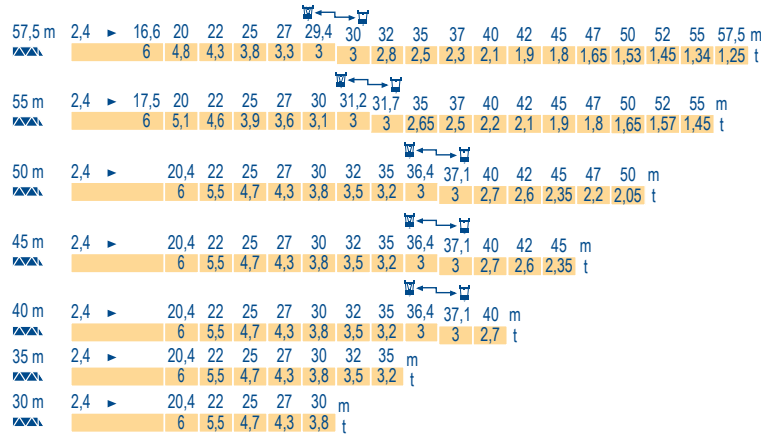
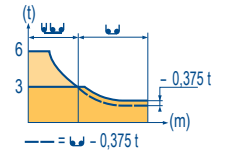
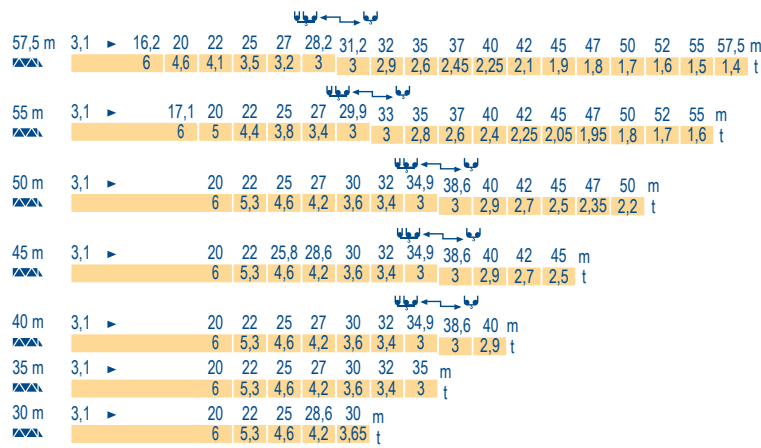
Load diagrams

Curvas de cargas

Curve di carico

Curva de cargas

LVL 1



Lest de contre-flèche

Gegenauslegerballast

Counter-jib ballast

Lastre de contra flecha

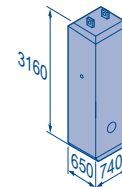
Contrappeso

Lastros da contra lança

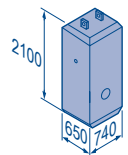
LVL 1

		3450 kg	2250 kg	▲ (kg)
57,5 m	14,3 m	5	-	17 250
55 m	14,3 m	4	1	16 050
50 m	13 m	4	1	16 050
45 m	13 m	3	2	14 850
40 m	13 m	4	-	13 800
35 m	13 m	3	1	12 600
30 m	13 m	2	2	11 400

3450 kg



2250 kg



Lest de base

Grundballast

Base ballast

Lastre de base

Zavorra di base

Lastros da base

LVL 1

□1,6 m	ZC 4030 - ● -	H (m)	40,1	30,1	20,1						
		▲ (t)	70	65	60						
□1,6 m	ZD 4030 - ● -	H (m)	50,1	40,1	30,1	20,1					
		▲ (t)	70	55	45	45					
□1,6 m	S 40 A - ● -	H (m)	51,4	48,1	44,8	39,8	34,8	29,8	24,8	19,8	
		▲ (t)	84	72	54	48	42	42	42	36	
□1,6 m	S 41 A - ● -	H (m)	58,1	54,8	49,8	44,8	39,8	34,8	29,8	24,8	19,8
		▲ (t)	114	102	78	54	48	42	42	42	36

CITY CRANE



MD 125 B

POTAIN®

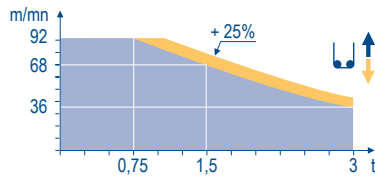
	F	D	GB	E	I	P
A	Distance entre cadres	Abstand zwischen den Rahmen	Distance between collars	Distancia entra marcos	Distanza fra i telai	Distância entre quadros
H1	Hauteur grue	Kranhöhe	Crane height	Altura grúa	Altezza gru	Altura da grua
P	Poids de la grue(en service)	Krangewicht (in Betrieb)	Crane weight (in service)	Peso de la grúa (en servicio)	Peso della gru (in servizio)	Peso da grua (em serviço)
R	Réaction horizontale	Horizontalkräfte	Horizontal reaction	Reaccion horizontal	Reazione orizzontale	Reacção horizontal
	Voir télescopage sur dalles	Siehe Kletterkrane im Gebäude	See climbing crane	Veja grua trepadora	Consultare gru in cavedio	Ver telescopagem sobre lages

Mécanismes
Antriebe
Mechanisms
Mecanismos
Meccanismi
Mecanismos


LYL 2

		↑						↑						ch - PS hp	kW				
33 LVF 15 Optima	m/min	3	12	36	48	68	92	1,5	6	18	24	34	46	30	22	260 m			
		t	3	3	3	2,25	1,5	0,75	6	6	6	4,5	3				1,5		
4 D3 V3	m/min	15 - 30 - 58												4	3				
RCV 145	tr/min U/min rpm	0 → 0,8												2 x 6	2 x 4,4				
ZC 4030 ZD 4030	RT 224	25												2 x 4	2 x 2,9				
S 40 A	RT 324 R ≥ 10 m	12,5 - 25												2 x 7	2 x 5,2				
S 41 A	RT 443 A1 2V R ≥ 10 m	15 - 30												4 x 5	4 x 3,7				
CEI 38 						IEC 38						kVA							
400 V (+6% -10%) 50 Hz												33 LVF : 50 kVA							

33 LVF 15
Optima



	F	D	GB	E	I	P
	Levage	Heben	Hoisting	Elevación	Sollevamento	Elevação
	Distribution	Katzfahren	Trolleying	Distribución	Distribuzione	Distribuição
	Orientation	Schwenken	Slewing	Orientación	Rotazione	Rotação
	Translation	Kranfahren	Travelling	Traslación	Traslazione	Translação

 Document commercial non contractuel. Pour toute information technique se référer à la notice correspondante. Unverbindliches Vertriebsdokument. Für technische Informationen, siehe die entsprechenden Anweisungen. This commercial document is not legally binding. For any technical information, please refer to the corresponding instructions. Documento comercial non contractuel. Para cualquier información técnica, ver la noticia correspondiente. Documento commerciale non vincolante, per tutte le informazioni tecniche fare riferimento al catalogo istruzioni. Documento comercial não contratual. Para qualquer informação técnica complementar consultar as respectivas instruções.



Americas
Tel : +1 888 479 7278
Tel : +1 717 593 2000

Europe - Middle East - Africa
Tel : +33 (0) 4 72 81 50 00
Tel : +44 (0) 191 522 2000

Asia - Pacific
Tel : +65 6264 1188
Fax : +65 6862 4142

www.manitowoccrane.com

18, rue de Charbonnières - B.R.173
69132 ECULLY Cedex - France

Tel. : +33 (0) 4 72 18 20 20
Fax. : +33 (0) 4 72 18 20 00
www.manitowoccrane.com

CITY CRANE MD 125 B
Réf. 2003 48 LYL 2

Copyright.Reproduction interdite © POTAIN 2003

Réalisation Secdoc